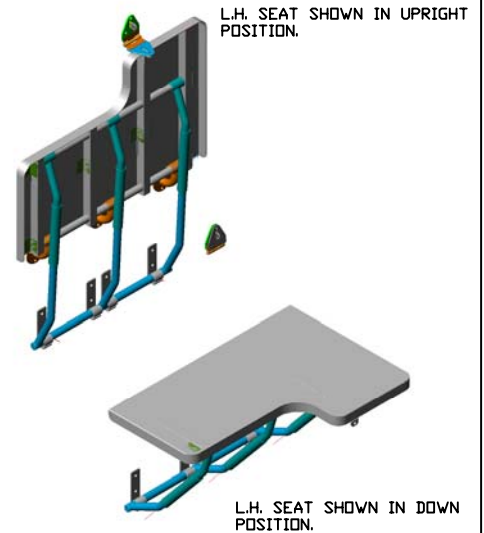
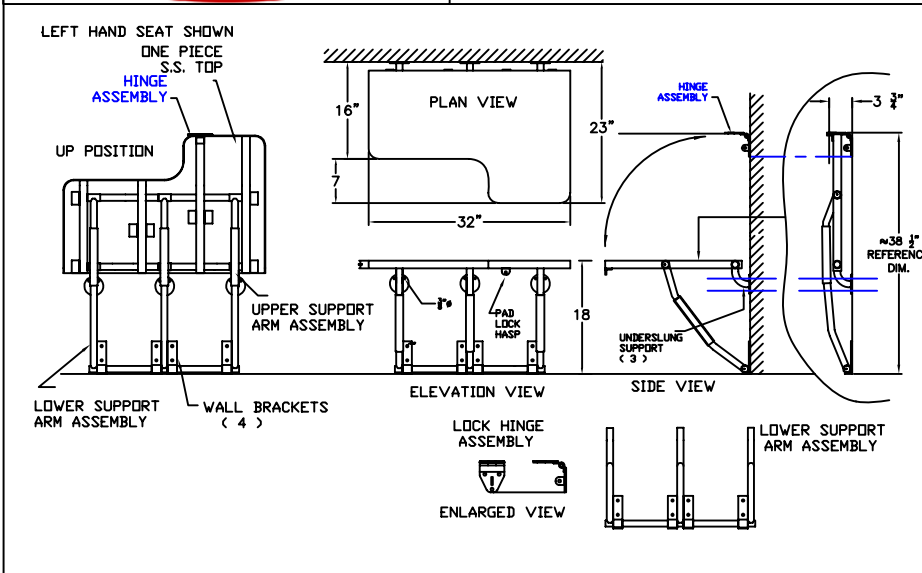




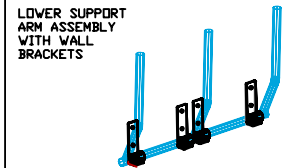
Technical Data

S-6204-SS

500 LB TEST SECURITY SHOWER SEAT



BREY-KRAUSE MFG. CO. S-6200 SERIES SECURITY SHOWER SEATS HAVE BEEN DESIGNED AND TESTED TO SUSTAIN A 500 LB. VERTICAL LOAD APPLIED TO THE TOP OF THE SEAT.



Construction:

- MAIN FRAME - 1 1/4" SQUARE, 16 GA.(.065)
- SUPPORT ARMS - 1"Ø X 16 GA.(.065) WALL THICKNESS ROUND TUBING
- FLANGES - 3"Ø X 7GA. (.180) WITH (3) .375 MTG. HOLES
- WALL BRACKETS - 7 GA.(.180) WITH (2) .375 MTG. HOLES
- SEAT TOP - 14 GA.(.078)
- LOCKING HINGE - 7 GA. (.180)
- PADLOCK HASP - 7 GA. (.180)

Operation:

LEFT HAND ENTRY ONTO SEAT
 WHEN SEAT IS NOT REQUIRED FOR USE IT MAY BE FOLDED INTO UPRIGHT POSITION.
 SUPPLIED LOCKING HINGE ASSEMBLY AND PADLOCK HASP ALLOWS FOR SECURED LOCKED POSITION WITH A PADLOCK (NOT INCLUDED).
 WHEN SEAT IS REQUIRED UNLOCK PADLOCK AND FOLD DOWN TO SEAT POSITION.

Installation:

SEAT TOP TO BE 18" LEVEL FROM FLOOR, MOUNT (3) UNDERSLUNG FLANGE SUPPORTS TO THE WALL. INSERT LOWER SUPPORT ARM ASSY. INTO THE UPPER SUPPORT ARM ASSY. ATTACHED TO THE FRAME. MOVE THE SUPPORT ARM ASSEMBLIES TO A POSITION ON THE WALL THAT ENSURES THE SEAT TOP IS LEVEL.
 MOUNT THE WALL BRACKETS TO THE WALL
 POSITION SEAT IN UPRIGHT POSITION, ALIGN HINGE ASSEMBLY HOLE WITH THE PAD LOCK HASP AND MOUNT LOCK HINGE ASSEMBLY TO THE WALL.

Guide Specification:

ALL STAINLESS STEEL CONSTRUCTION
 PAD LOCK AND FASTENERS ARE NOT INCLUDED
 UNIT WEIGHT IS APPROXIMATELY 40 POUNDS
 FULLY WELDED WITH NO OPEN ENDS
 SATIN #4 FINISH

The manufacturer reserves the right to make changes in design and material without formal notice and without incurring obligation

© Copyright 2005
 Brey-Krause Manufacturing

Brey-Krause Manufacturing
 1209 West Lehigh Street, Bethlehem, PA 18018
 Phone: 610.867.1401 Fax: 610.866.1433
 www.breykrause.com